

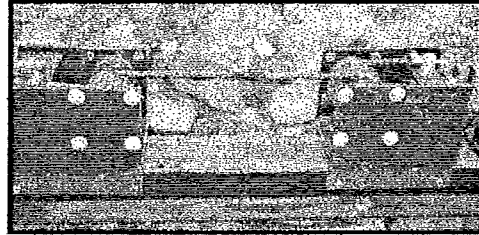
Draft Form – Summary of Tool or Technique Observation/Evaluation Sheet – Draft Form

(Use one to four stars, with four being the best or positive, or give a few-word response, where possible. Use back for photos or additional details.)

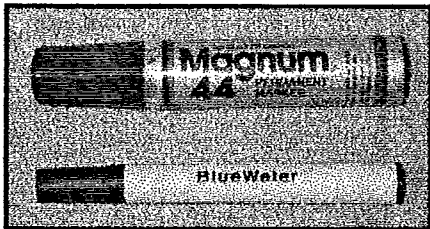
	General Type of Item or Nature of Technique	Item/Technique #1	Item Technique #2	Item/Technique #3
Name				
Specifications/Rationale				
Availability				
Mission Usefulness				
Field Functionality				
Cost/Maintenance/Training Constraints				
Description of Testing/Observation				
Specific Item/Technique T/O Issues				
Total # of Observations				
Perceived Strengths/Limitations				
Measurable Results				
Additional Comments				
Contact Person				
Future Plan				

How Much Does It Really Matter?

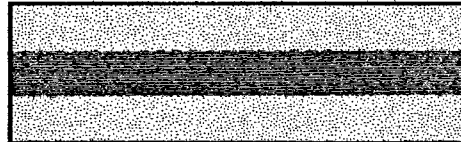
Presented by
John McKently & Bruce Parker
CMC Rescue, Inc.
ITRS 2001



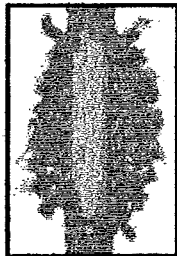
Rope Markers



The Mark

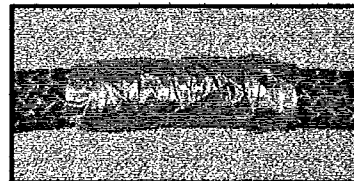


Nylon Marker



Permanent Marker

Duct Tape

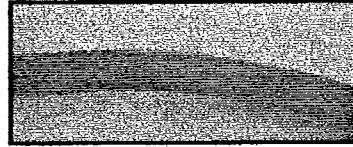


Battery Acid Tests

Immersion Test

Wipe Test

Battery Acid



Bleach Tests

100% Clorox Ultra

10:1 - Water / Clorox Ultra

Water Tests

30 Minutes

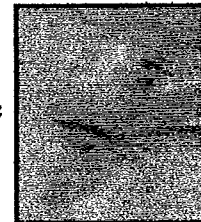
3 Hours

Asphalt Roofing Material

Sheath Coated
3 Months

Failure Modes

Catastrophic Failure



Failure Modes

Core Failure



Marker Test Results

BlueWater Nylon Marker
0% Loss

Sanford Permanent Marker
0% Loss

Duct Tape Test Results

0% Loss

Battery Acid Test Results

Immersion Test
Nylon/Nylon - 35% Loss

Wipe Test
Nylon/Nylon - 1% Loss
Polyester/Nylon - 42% Loss

Bleach Test Results

100% Bleach
14% Loss

10:1 Water/Bleach
0% Loss

Water Test Results

30 Minutes
2% Loss

3 Hours
18% Loss

**Asphalt Roofing Material
Test**

4% Loss

Cautions & Disclaimer (Because it wouldn't be an ITRS presentation without it)

- Please DO NOT use this presentation as an endorsement of certain practices. These results are based on a small number of samples.
- Results may change with different rope.
- Different brands of duct tape may use different adhesives.
- Different brands of markers may use different ingredients. Recipes may vary with the same brand of markers.
- The length of time the rope was exposed to chemicals may change the outcome.